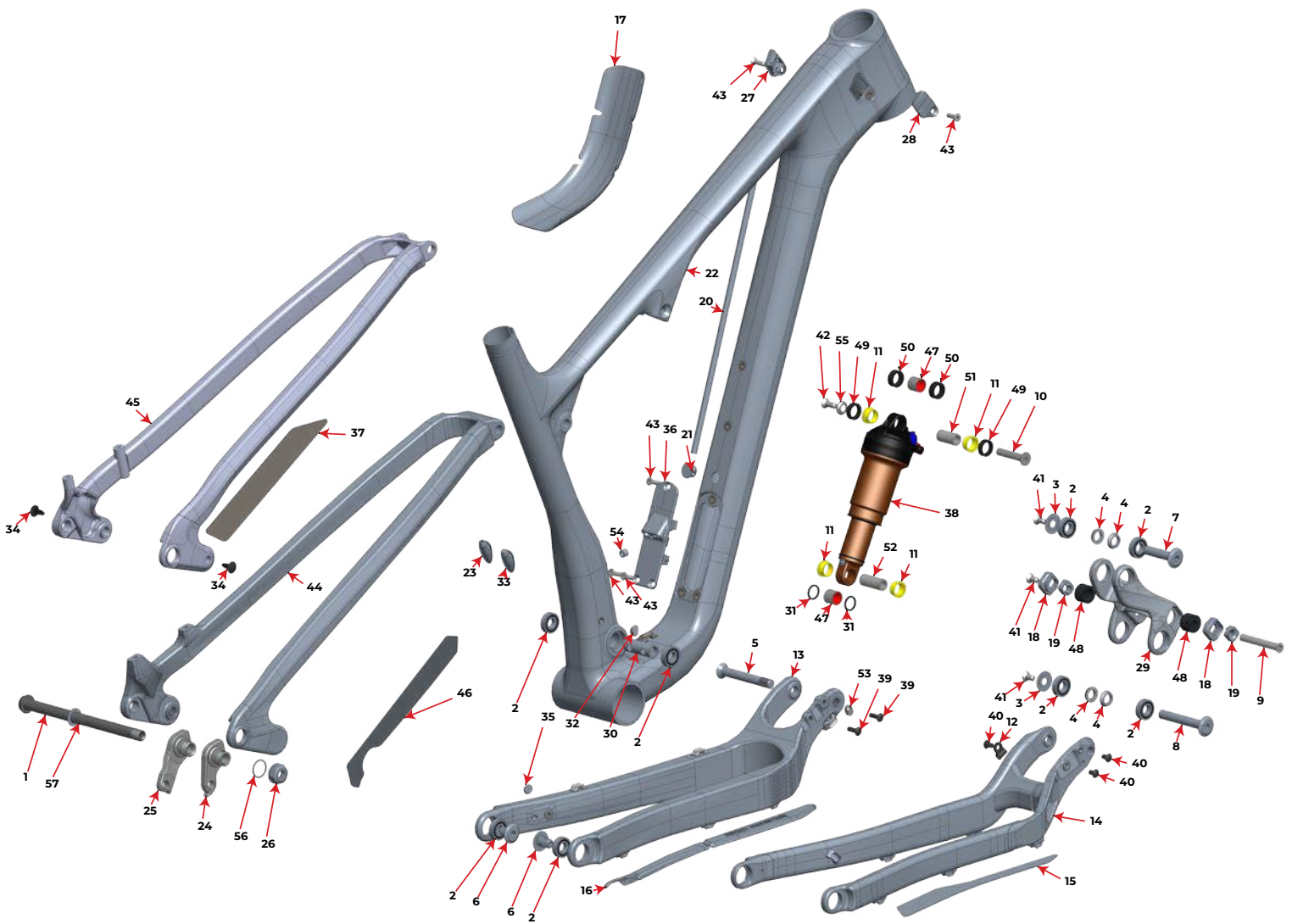


MY20 MY19 MY18

# Element Carbon



#	QTY	ITEM	PART NO.	REVISION	DESCRIPTION
			<b>1817011</b>		<b>Axle kit</b>
1	1	AXLE, REAR	3227009	C	REAR AXLE 12X 173MM, HARD BLACK ANO
57	1	WASHER	3227006	B	WASHER, 12x19x0.5MM, 304 SS
			<b>1819036</b>		<b>ELEMENT LINK WITH BEARING KIT</b>
29	1	LINK	1097180	A	ELEMENT LINK, AL 7075 T-6, HARD BLACK ANO
2	4	BEARING	1807042	NIL	ENDURO 6900 2RS MAX, 22X10X6
			<b>1818012</b>		<b>HANGER KIT SHIMANO DIRECT MOUNT</b>
25	1	HANGER	1099041	NIL	REAR DER. HANGER, EXT THREAD, SHIMANO DIRECT MOUNT
26	1	HANGER NUT	1099033	NIL	HANGER NUT, M16X1, 8MM HEX
56	1	WASHER	1808029	NIL	WASHER, 16x20x0.5MM, 304 SS
			<b>1818013</b>		<b>KIT STANDARD HANGER</b>
24	1	HANGER	1099031	A	REAR DER. HANGER, EXT THREAD, STD MOUNT
26	1	HANGER NUT	1099033	NIL	HANGER NUT, M16X1, 8MM HEX
56	1	WASHER	1808029	NIL	WASHER, 16x20x0.5MM, 304 SS
			<b>1819037</b>		<b>ELEMENT PIVOT BOLT KIT</b>
3	2	BEARING CAP	1807043	NIL	6900 BEARING CAP, AL 7075 T-6, HARD BLACK ANO
4	4	BEARING SPACER	1807044	NIL	6900 BEARING SPACER
5	1	BOLT	1807045	B	BOLT C'SUNK 10*70MM, M10X1.0, AL 7075 T-6, HARD BLACK ANO
6	2	BOLT	1807046	NIL	BOLT, 10MM X 15MM, M10X1 EXT., AL 7075 T-6 HARD BLACK ANO
7	1	BOLT	1807047	NIL	BOLT, 10MM X 43MM, M6X1 INT., AL 7075-T6, HARD BLACK ANO
8	1	BOLT	1807048	NIL	BOLT, 10MM X 67MM, M6X1 INT., AL 7075 T-6, HARD BLACK ANO
9	1	BOLT	1807049	C	CSUNK BOLT, 8MM X 57MM X M6 INT.
10	1	BOLT SHK.	1807062	G	SHOCK BOLT, SOLID, OD:8MM, L: 41MM
30	1	MAIN PIVOT SPACER	1807051	A	MAIN PIVOT SPACER 38.75MM
41	3	SCREW M6x12	180566-012	NIL	FLAT HEAD C'SUNK SOCKET SCREW, M6-1.0 X 12mm, A4/316 SS, 55060.060.012
42	1	SCREW M6x16	180566-016	NIL	FLAT HEAD C'SUNK SOCKET SCREW, M6-1.0 X 16mm, A4/316 STAINLESS STEEL
55	1	WASHER	1807064	NIL	C'SUNK WASHER: (for M6 screw) ID:6 x OD:14.6 x 3.25mm THK.
			<b>1817017</b>		<b>BEARING KIT</b>
2	8	BEARING	1807042	NIL	ENDURO 6900 2RS MAX, 22X10X6
			<b>3708024</b>		<b>Protector Kit ELEMENT CARBON</b>
15	1	CS PROTECTOR	3708016	NIL	ELEMENT ALLOY CS PROTECTOR
46	1	SEATSTAY PROTECTOR	3708003	A	Element die-cut seatstay protector
17	1	DOWN TUBE PROTECTOR	3708009	B	Element down tube protector
			<b>3709092</b>		<b>Protector Kit ELEMENT FOR MIXED CARBON &amp; ALLOY</b>
16	1	CS PROTECTOR	3708036	NIL	ELEMENT CS PROTECTOR
37	1	PROTECTOR	3708008	D	SEATSTAY PROTECTOR
17	1	DOWN TUBE PROTECTOR	3708009	B	Element down tube protector
			<b>1817023</b>		<b>ELEMENT HEADTUBE PANEL KIT</b>
43	2	SCREW, MSX16	1806009	NIL	FLAT HEAD C'SUNK SOCKET SCREW, M5-0.8 X 16mm, ALUMINIUM
27	1	HT PANEL LEFT	1097136	C	HT PORT PANEL, LEFT
28	1	HT PANEL RIGHT	1097140	C	HT PORT PANEL, RIGHT
			<b>1817024</b>		<b>PORT COVER KIT</b>
36	1	PORT COVER	1807052	C	D12 BATTERY HOLDER, CABLE PORT COVER
43	3	SCREW, MSX16	1806009	NIL	FLAT HEAD C'SUNK SOCKET SCREW, M5-0.8 X 16mm, ALUMINIUM
			<b>1817025</b>		<b>FRONT DERAILLEUR KIT</b>
53	1	SPACER	180473	B	E-TYPE FD SLOT SPACER, FOR THRU BOLT; AL6061
39	2	SCREW	180574-014	NIL	DOME HEAD SCREW, MSX14MM, SS
			<b>1819042</b>		<b>FOX LIVE PLUG KIT</b>
35	1	PLUG	1809003	NIL	FOX LIVE ACCELEROMETER PLUG
21	1	FOX LIVE PLUG	1808057	NIL	FOX LIVE PLUG, NYLON PLASTIC, BLACK
			<b>1810009</b>		<b>RIDE 9 FLIP CHIP KIT</b>
18	2	FLIP CHIP	1807003	NIL	FLIP CHIP, OUTSIDE, AL7075, BLACK ANODIZE.
19	2	FLIP CHIP	1807004	A	FLIP CHIP, INSIDE, AL7075, BLACK ANODIZE.
			<b>1819038</b>		<b>ELEMENT SHOCK REDUCER KIT</b>
48	2	SHOCK REDUCER	1807053	B	SHOCK REDUCER, RIDE 9 MINI
31	2	O-RING	180522	NIL	RUBBER O-RING, FOR 1/2" SHOCK PIN
			<b>1807054</b>		<b>WATER BOTTLE SPACER</b>
54	1	SPACER	1807054	A	WATER BOTTLE SPACER, 6MM, AL 6061 T-6, HARD BLACK ANO
			<b>1819041</b>		<b>ELEMENT CARBON GROMMET AND CABLE GUIDE KIT</b>
12	1	CABLE GUIDE	YF-W01	NIL	Bolt On Cable Guide
40	3	SCREW	1808035	NIL	DOME HEAD SCREW, M5X8MM, ALLOY BLACK ANO
23	1	GROMMET	1807059	NIL	SEAT TUBE GROMMET
32	1	PLUG	1805083	NIL	D12 PORT BLOCKOFF PLUG, JAGWIRE P/N: CCN009
33	1	PLUG	1807058	NIL	SEAT TUBE PLUG

Sold as a kit only. Individual part not sold separately